

spaces

Utah Homes & Lifestyles

April 10, 2020

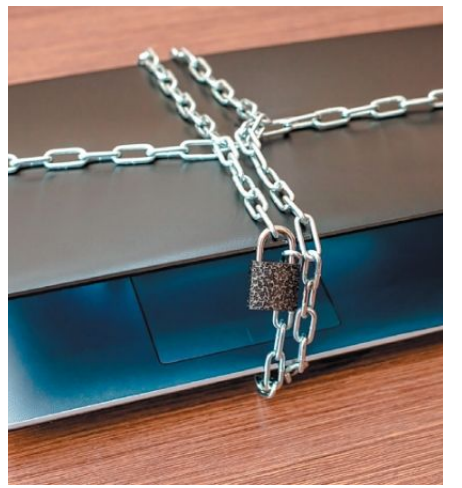


SUMMIT CREEK
WOODLAND HILLS

» STORY STARTS ON PAGE 2

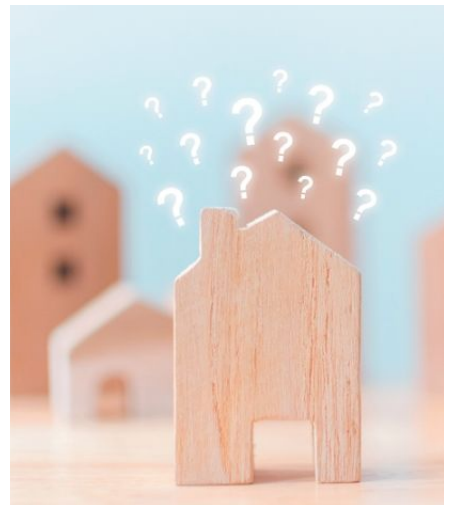
A RETREAT TO NATURE AT SUMMIT CREEK

MORE INSIDE



AT HOME WITH MARNI JAMESON

Put Angst to Good Use and Organize
What's Most Important » 5




EXPERT ADVICE: UTAH ASSOCIATION OF REALTORS


Is It Still a Good Time to Buy and Sell?
» 6



 VISIT OUR WEBSITE!
spacesutah.com

 /utahspaces

 /utahspaces

 /utahspaces

1371 E
2nd Avenue
SALT LAKE CITY

5 beds 4 baths 5,870 sqft

Offered at \$2,300,000

Paul Svendsen

801 441 8563
paulsvendsen@winutah.com



Ensuring that our agents, office staff, and clients are safe and healthy is our top priority and we are finding creative ways to connect during this time of social distancing so that our agents can continue to help clients move their lives forward in these uncertain times.

All in, for community.
All in, for you.


Windermere
REAL ESTATE



SUMMIT CREEK

WOODLAND HILLS

For Those Called Home to the Wasatch



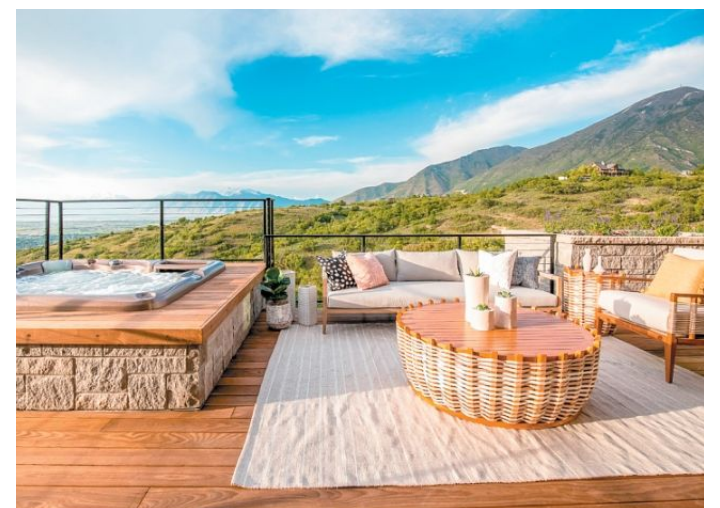
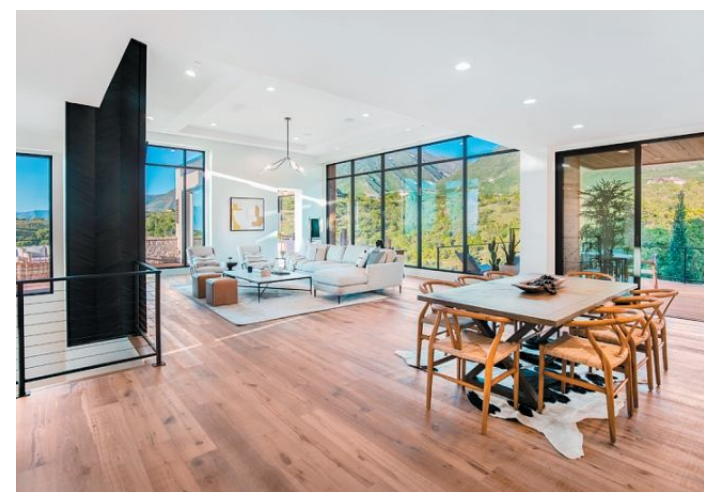
As we adjust to a “new normal” during this unprecedented time, residents of the private residential community Summit Creek are experiencing a newfound appreciation for their mountainside sanctuary amid the foothills of the Wasatch. While they have long valued the community’s low-density setting high above the inversion, their shared sense of gratitude for the place they call home has undoubtedly grown tenfold in recent weeks. Now, more than ever, families are seeking places of refuge to reconnect both with themselves and the natural world. And at Summit Creek, this sentiment has been at the heart of the community’s ethos since day one.

Here, home isn’t just a beautifully crafted mountain residence. It’s equal parts the natural setting in which it resides. At Summit Creek, 300+ acres of untouched land is yours to experience and discover. Residents can be found mountain biking to reach the highest peaks, hiking among the backcountry’s boundless trails, stretching out with morning yoga on the lawn, cooling off at the Summit Springs pool complex. Life here is just as much about retreating to luxury as it is heading out to explore the wild landscape that lies in your very own backyard.

And while homes at Summit Creek serve as the ultimate basecamp for outdoor adventures, they’re also thoughtfully designed retreats to house lifelong memories from within—from cozying up by the fire in the winter months to sipping a refreshing drink on the patio surrounded by panoramic mountain vistas come summer. At Summit Creek, each home has been meticulously designed to foster a more prolific connection between you and the outdoors.

It is for this reason that many of Summit Creek’s homes have received coveted Judge’s Choice Awards in the annual Utah Valley Parade of Homes. From the community’s landmark contemporary country estate, which recently sold at \$2,250,000, to the Becki Owens-designed mountain view estate, offered at \$2,175,000, the community has become highly sought-after for its building program and custom mountain homes that afford full-time living in harmony with nature.

Now, as families face so much uncertainty and change around the world, it is this simple return to nature that many are so desperately searching for. And at Summit Creek, this call of the wild is, and always will be, heard loud and clear.



Schedule a virtual tour of Summit Creek by contacting Doug Gilmore at 801.639.0944 or visit us online at SummitCreekUtah.com.

